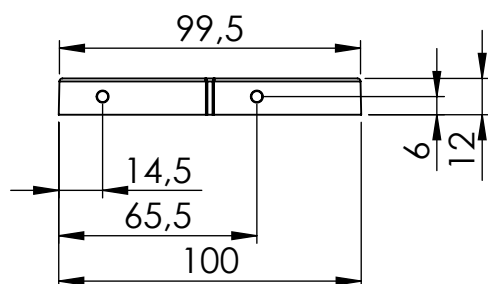
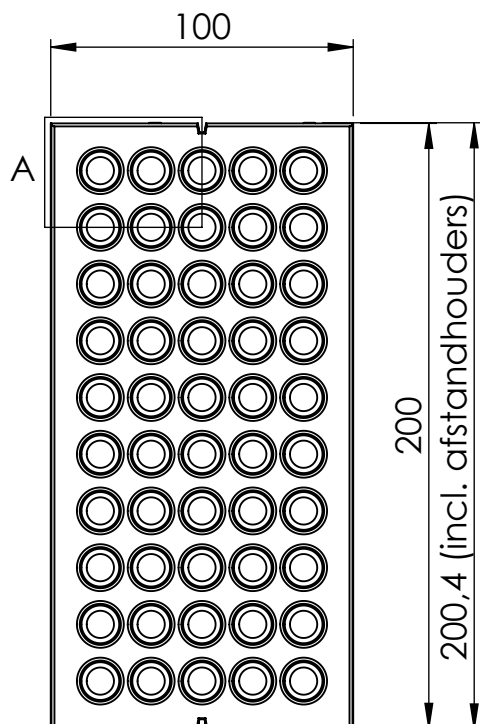
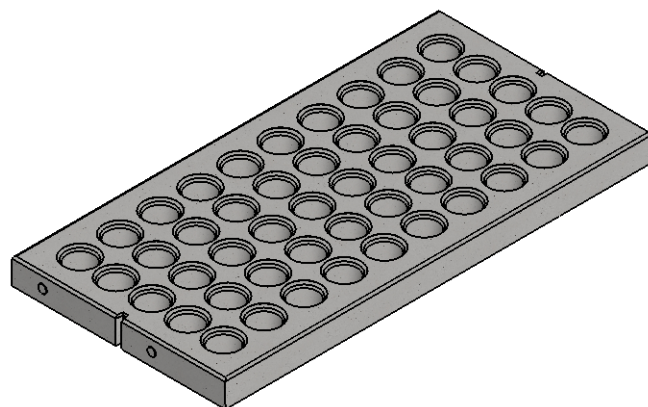


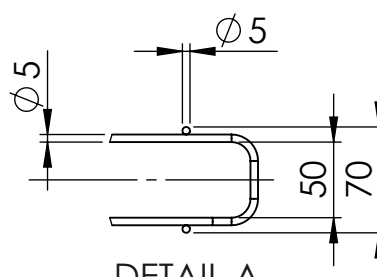
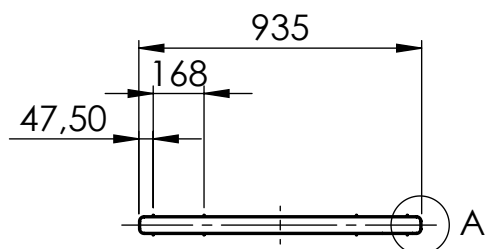
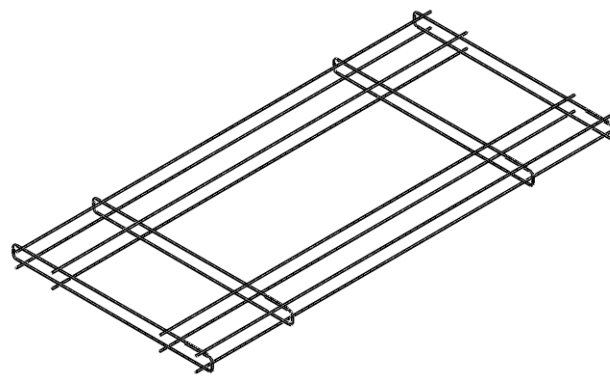
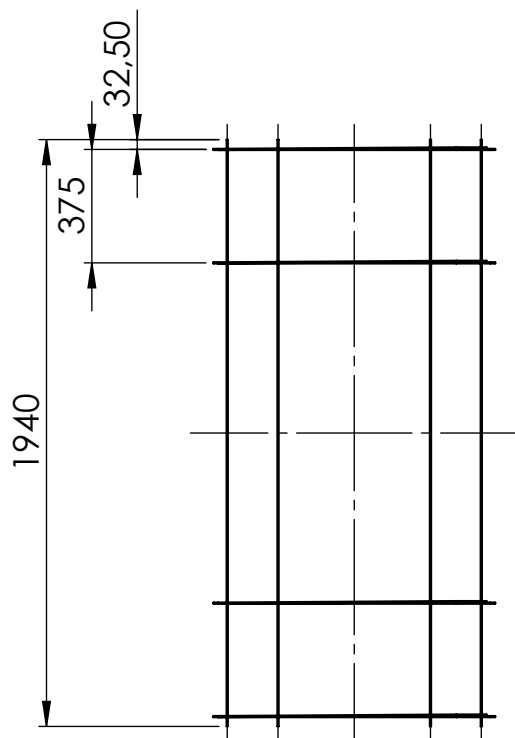



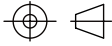
DETAIL A  
SCALE 2 : 25



Afmeting (HxLxB): 12x200x100 cm	Gewicht: 427 Kg			
Materiaal: Beton	Volume: 178 Liter			
Wapening: wa01a0002	Kleur: Beton grijs			
Artikelnummer: bp05p0002  Omschrijving: simgras 200 x 100 x 12 - d5  Toevoeging: -	Oppervlakte behandeling: Industrieel glad			
	Betonsterkte: C55/67			
	Milieuklasse: XA3			
	Belastingsklasse: Volgens opgave			
	Norm: NEN-EN206-1 / NEN8005			
 <div>Geurs Beton BV Slotsdwaarsweg 6B 7496 PX Hengevelde (NL)  Tel : +31 (0)547 - 333 790  E-mail : info@geursbeton.nl Internet : www.geursbeton.nl</div>	<div>Projectie:</div> 	Schaal: 1:25	Revisie:	
		Eenheid: cm	Revisie datum:	
	Getekend door: PM	Akkoord: EB		8-10-2015
	Datum: 8-10-2015	Pagina: 1 van 1		Formaat: A4



DETAIL A  
SCALE 1 : 5

Pos.	Aantal	Artikelnummer	Omschrijving	Material	Norm
1	4	wa01p0001	beugel 5 - xc4 b100	FeB500 HKN	NEN 6008
2	8	wa01p0004	lengtestaaf 5 x 1940	FeB500 HKN	NEN 6008
General roughness 12.5 ✓		Tolerances unless otherwise stated dim ±0.5 angle ±0.5°		NEN-ISO 1101 A	
Item number wa01a0002		Sandblasting -		General roughness according NEN 3634 Ra in micron (µm) ✓ ▽ ∅	
Description d5 - 200x100 (xc4)		Surface treatment -		Material -	
		Coating -		Mass 3629 g	
		Colour -		Process Welding	
				Heat treatment -	
 <p>Geurs Beton BV Slotsdarsweg 6B 7496 PX Hengevelde (NL) Tel : +31 (0)547 - 333 790 E-mail : info@geursbeton.nl Internet : www.geursbeton.nl</p>		Projection 		Revision	
		Scale 1:25 Unit mm		Date	
		Drawn by PM Date 6-10-2015		App. MB 6-10-2015	
				Page 1 of 1 Size A4	